

POLL SANTA GERTRUDIS BULL SALE



Benelkay

20TH AUGUST 2026

AT 'GLENMORE' MULLALEY NSW

WWW.BENELKAYSANTAS.COM.AU

PREVIOUS SALE TOPPERS 2025



LOT 8 BENELKAY ULTRABOX U016 (PP)
SOLD TO BULLAMAKINKA STUD QLD \$30,000



LOT 2 BENELKAY U2 U002 (PP)
SOLD TO MOONGANA STUD QLD \$26,000



LOT 4 BENELKAY UNDERLINE U022 (PS)
SOLD TO BIRIMBA STUD NSW \$19,000



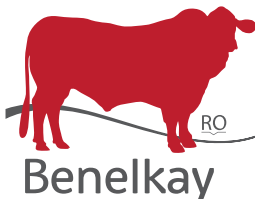
LOT 32 BENELKAY UMAX U279 (PP)
SOLD TO RJ & DL STENDELL NSW \$17,000



Download a catalogue pdf from www.benelkaysantas.com.au



VIEW AUCTIONS
PLUS CATALOGUE



POLL SANTA BULL SALE

Thursday 20th August 2026
Sale Commencing 1pm on Property
'Glenmore' Mullaley

40 SANTA GERTRUDIS BULLS

Inspection from 9am or contact Andrew 0427 435 201
Download a catalogue pdf from www.benelkaysantas.com.au



Andrew Orman 0427 435 201

Selling Agents Gunnedah Office: (02) 6742 055

Nik Hannaford Elders Livestock Manager Gunnedah: 0417 201 460

Jon Glover: 0428 486 887 Rob Galton: 0458 423 030

Brian Kennedy Stud Stock: 0427 844 047

Elders Stud Stock Auctioneer: Scott Cooper: 0427 674 411



WELCOME TO BENELKAY



Andrew, Jules, and Georgie are pleased to extend an invitation to attend our 15th annual Benelkay Poll Santa Gertrudis Bull Sale on Thursday the 20th of August 2026 at 1.00pm on property "Glenmore" Mullaley. This is the week of Ag-Quip this year, so book accommodation early in Gunnedah and surrounding towns please.

We are pleased to present to you our line-up of forty Poll Santa Gertrudis bulls, with 50% being Homozygous Poll. We feel confident with the overall quality and evenness of the sale team, with all sires being represented strongly throughout the sale catalogue. We are very proud to offer this year's group of sale bulls and feel they are of the highest quality we have offered, mostly due to the high standard of our own sire battery we are using over our 400 stud cows.

This year we have DNA Genomic Sire tested our sale team so you the buyers can have every confidence in the parentage of the sires you are buying from our Stud. We are offering a range of types of bulls to suit different market requirements and realise not all bull buyers are looking for the same type of bull for their operation. We have aimed to keep abreast of the beef industry and have made considerable investments in poll sires in the past forty years to produce seed stock bulls to suit both the commercial and stud sectors. We have started using our own Homozygous Sires to increase this trait within our own female stud herd, with very pleasing results.

All bulls will have BreedPlan figures to assist you in the selection of the sire to suit your breeding objectives. Also, what must be realised is that we buy in most of our sires from non Breedplan herds, as these bulls have many other traits we are chasing in our herd, and we need to have other genetics coming into the system of Breedplan. The downside of this consequence is it does take a few years to get reliable data on the un- Breedplan, non – proven Breedplan bulls. Due to this most of our sires start below breed average for all their data so it does take a while to get the amount of progeny on the grown and tested to get the accuracy of the Breedplan traits comparable to herds only using Breedplan bred sires.

We will also have raw data figures for weight, DWG, scans for EMA and Fats. The bulls will be Semen collected by Caitlin Warner Australian Premier Genetics and Morphology Tested, at the University of Sydney Camden Campus. Our aim is to provide paddock reared fit and healthy bulls, so cattlemen can be confident in their bull purchases. You can view pictures of the sale draft at www.benelkaysantas.com.au or contact Andrew 0427 435 201 directly for more information or to arrange inspections presale if you feel that it will assist you. Looking forward to catching up with you all on sale day.

DIRECTIONS

With navigators use Keechs Rd Goolhi as a reference point, with google use Benelkay Santa Gertrudis Stud.

FROM GUNNEDAH

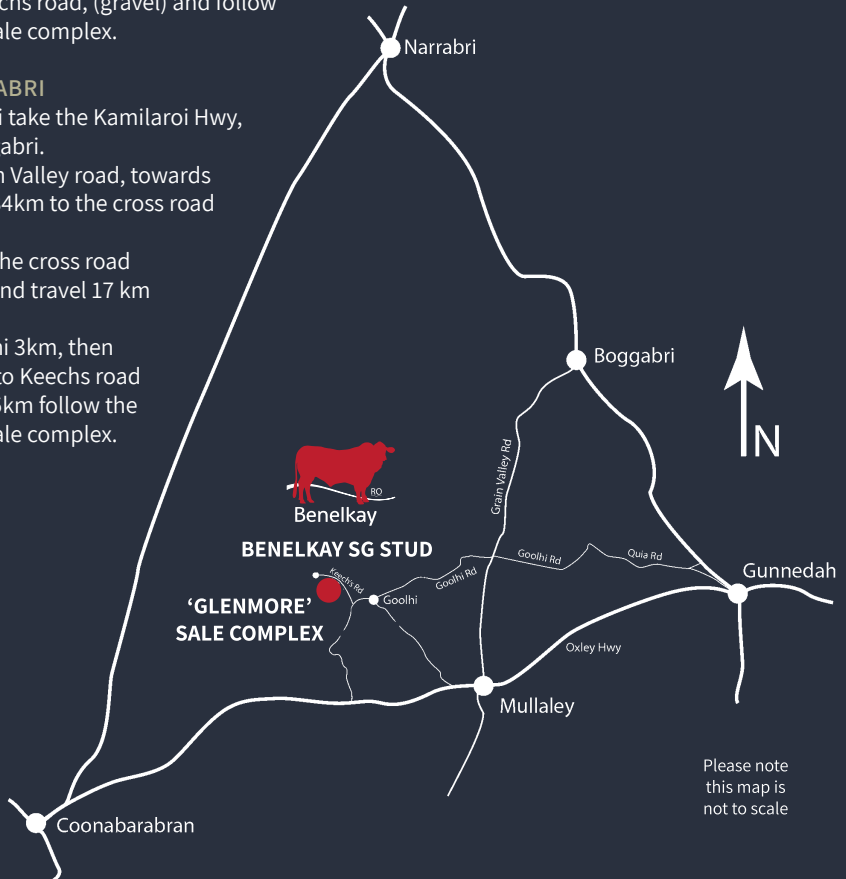
From Gunnedah take the Oxley Hwy, 34 km's to Mullaley. Pass through Mullaley on the Oxley Hwy and travel 5km's towards Coonabarabran, then turn right onto the Booloolo road, to Goolhi. 15km to Goolhi, turn Left and go 3 km, then turn Right onto Keechs road. 6.5km on Keechs road, (gravel) and follow signs to the sale complex.

FROM NARRABRI

From Narrabri take the Kamilaroi Hwy, 55km to Boggabri. Take the Grain Valley road, towards Mullaley, for 34km to the cross road intersection. Turn right at the cross road intersection and travel 17 km to Goolhi. Go past Goolhi 3km, then turn Right onto Keechs road (gravel) go 6.5km follow the signs to the sale complex.

FROM COONABARABRAN

Take the Oxley Hwy 54km towards Mullaley; turn Left off the Hwy to Goolhi. 10km down the gravel road, turn Left, as you come onto the tar, onto Keechs road (gravel). Go 6.5km on Keechs road; follow the signs to the sale complex.



Please note this map is not to scale



SALE INFORMATION

HEALTH - VACCINATIONS

7 in 1, Vibrio, AD&E, Multimin and Botulism Vaccinations have been done on the 25.01.2026 and 30.05.2026. All sale bulls have received two shots this year and should receive a booster to fall into your own breeding program.

Benelkay stud is in a Bovine Johne's disease protected clean area. There have never been any traces of this disease detected at our stud's properties. We have completed a Grazing Manual Biosecurity Template, version 1.1 before the 30/06/2017. There has been veterinary oversight into the development of our biosecurity plan, as we aim to remain a J-BAS 6 score.

TREATMENTS

All bulls have been treated on the 25.01.2026 with Ivomec pour and on 30.06.2026 with Cydectin pour on.

FEEDING

The Sale Bulls have been running together in a large mob of about 100 male cattle since weaning. From January 2026 they have been run on native pasture in a sale mob of bulls of around fifty, then cut down to a mob of forty in March and split into two paddocks as the Sale bull team. Then in April 2026 the bulls have been given a light supplementation of hay, grain and canola meal.

HANDLING

All bulls are handled with four-wheel motorbikes and dogs and are run behind electric fences. Our bulls have never been handled with horses. All bulls are quiet but as we all know they can react differently when put into pressure situations or different surroundings, particularly on sale day or being transported as they have never left the property.

SEMEN / MORPHOLOGY TESTS

All bulls have been evaluated for breeding soundness and semen tested by Caitlin Warner Australian Premier Genetics and Morphology Tested, at The University of Sydney Camden Campus. Individual morphology results will be available on sale day.

SCANNING

All bulls have been scanned for EMA, Fat (Rib, Rump, IMF%) and Scrotal Size Measurements, by Southern Cross Bovine Scanning Services (Lonnie Stone). This was done at 400 days old for Breed Plan then again before sale day for their raw data on the supplementary sheet. This will be conducted in early August 2026. The raw data will be available a few days before our sale on social media and our web site as well as hard copies on sale day.

INSPECTIONS

Inspections are welcomed anytime. Bulls will be yarded by 9.00am on Sale day. Pre-sale day inspections can be arranged by contacting Andrew Orman on 0427435201 or Elders Gunnedah. Supplementary sheets containing all relevant bull information will be available a few days prior to the sale and on sale day. If you would like a copy emailed to you please contact Andrew or visit our website or Facebook page to download a copy, a few days prior to sale day.

INSURANCE

We have arranged for company insurance representatives (Elders and WFI) to attend the sale and we highly recommend that buyers insure their purchases from the fall of the hammer.

REBATE

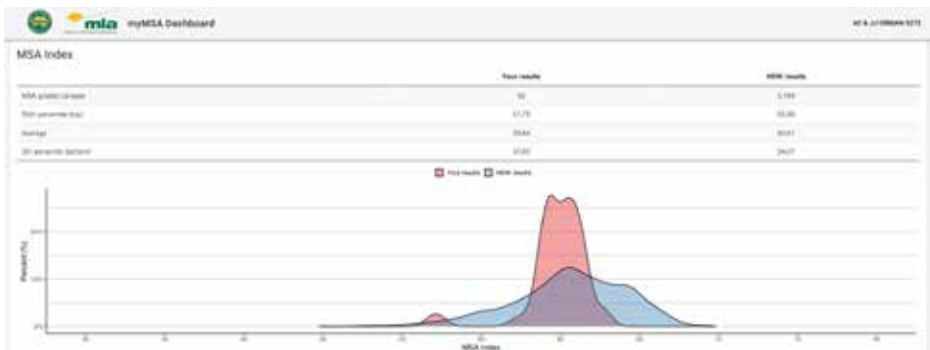
The vendors offer to pay a 2% rebate to outside agents who introduce their clients in writing to them 24 hours prior to the sale and settle in full on their behalf within 7 days of the sale.

AUCTIONSPLUS

The sale will be interfaced with auctions plus, for clients that cannot attend on sale day, please organize with your agent at least 24 hours prior to sale day. Phone bidding can be organised through Elders Gunnedah, contact Jon Glover 0428 486887 Nick Hannaford 0417 201460 or Brian Kennedy, Elders Stud Stock 0427 844 047, there is good mobile phone reception at the bull sale venue.

BENELKAY MSA COMPLIANT

Below is an MSA Index benchmark for AC JJ Orman TA Benelkay Pastoral Company. This graph is for our own Benelkay steers sold and grading MSA compliant.





AIR STRIP

An all-weather air strip is available 5km from the sale venue, to use this please contact Andrew Orman

ACCOMMODATION WE RECOMMEND

GUNNEDAH:

Maynstay Motel

380 Conadilly St (02) 6742 7150

McKellar Motel

342 Conadilly St (02) 6742 6838

NARRABRI:

Bellview Motel Narrabri

Cnr Newell Hwy & 132 Barwan St
(02) 6792 3844

Crossroads Hotel Narrabri

168-170 Maitland St (02) 679 25592
Coonabarabran

You can also try Airbnb Narrabri

COONABARABRAN:

Acacia Motor Lodge

10 John Street (02) 6842 1922

All Travellers Motor Inn

23-25 John St, Coonabarabran
(02) 6842 1133

You can also try Airbnb Coonabarabran

DELIVERY

Please fill out all details in the delivery slip at the back of this catalogue, and organise with Elders post sale before you leave, to aid in the delivery of your bulls. Delivery can be on sale day. If you wish to have another delivery date please contact Andrew Orman or Elders Gunnedah team.

The vendors will provide all care with your purchases but will not be responsible after the fall of the hammer for any injury to bulls.

TRANSPORT

Local carriers have been contacted and will be present on sale day. Please look for advertising within this catalogue.

BREEDING GUARANTEE

We have taken a lot of time and effort to ensure we are presenting fertile bulls for sale that are structurally sound to the best of our knowledge, we want good results from your investment, as do you. If you have any issues with your purchase please contact us, we are willing to work together for a resolution acceptable to both parties for any reasonable claim that is made in a reasonable time frame.

CATERING / REFRESHMENTS

The local Mullaley Pre-School will be catering for the day.

RISK & RESPONSIBILITY

Any person attending the sale, do so at their own risk. The vendors assume no liability, legal or otherwise for any injury, accident, loss or damage to any person or property.

DISCLAIMER

The vendors and agents have produced this catalogue with accurate information, however will not be responsible for any errors or omissions.

GST

Prices for lots sold will be GST exclusive at the fall of the hammer and 10% will be added at time of invoicing.



We're growing here.



ampsagribusiness.com.au

Armatree | Gunnedah | Moree | Tamworth | Walgett



AuctionsPlus[®]

Australia's Livestock Marketplace

Can't make the sale?

Purchase online in eight simple steps!

Log on to AuctionsPlus and bid on your phone, tablet or computer.

1

REGISTER ONLINE

Free once off registration for all auctions.

2

COMPLETE BUYER INDUCTION

The buyer induction will help you understand the roles and responsibilities of everyone on the AuctionsPlus system.

3

VIEW CATALOGUE

View photos, videos, pedigrees and more.

4

ENTER AUCTION

Log into the auction anytime, anywhere and bid on your mobile, tablet or computer.

5

AUTO BID

Can't stay for the whole sale? Set your maximum bid on the lot that you want to purchase and let the computer bid for you.

6

CONTACT SELLING AGENT

If successful, contact selling agent to arrange payment and delivery. The agent contact details will be available in the catalogue header.

7

PAYMENT

Via the selling agent's terms and conditions.

8

DELIVERY

Arrange transport of livestock at your expense.

Contact AuctionsPlus on (02) 9262 4222
or email studsales@auctionsplus.com.au
or www.auctionsplus.com.au

Check us out on:



CROSS BREEDING BENEFITS

Benelkay clients are gaining advantages cross breeding using Benelkay Bulls over their British/Euro female herds.

Heterosis or Hybrid Vigour: meaning, difference of performance of vigor of crossbred progeny from the average of the parental breeds.

When looking at breeds of cattle the breeder must consider their country, the environment, where their cattle are run. Their end goals for their cattle and the markets they want to sell to. They also need to be honest with themselves when they consider these realities. Too often, the selection criteria stops at the colour of the coat and or the breed. What breeders need to look at is Weight for Age.

Cattle breeding is all about how much money is in your pocket when you sell your cattle not the highest cents for kg.

This is where a crossbreeding program using Benelkay Bulls will pay the bills with increased weight for age, hybrid vigor, fertility and doing ability.

Hybrid Vigour from crossing two British breeds together is of a lower rate. Using a Benelkay Bos Indicus Bull over a British or Euro is a free twenty percent extra weight for doing very little. The more distantly the parental breeds are related, the greater amount of hybrid vigour can be expected.

Hybrid vigour is greater for fitness traits related to reproduction, survival / mortality of cattle (which usually have lower heritability).

Ultimately our final aim should always be “weight of carcass produced in the shortest time possible”.





BA & CA COOPER EARTHMOVING

**EXCAVATING CONTRACTORS
IN GUNNEDAH**

**M: Brett 0428 422 936
E: earth_works@bigpond.com**

LOOKING AFTER YOUR NEW BULL

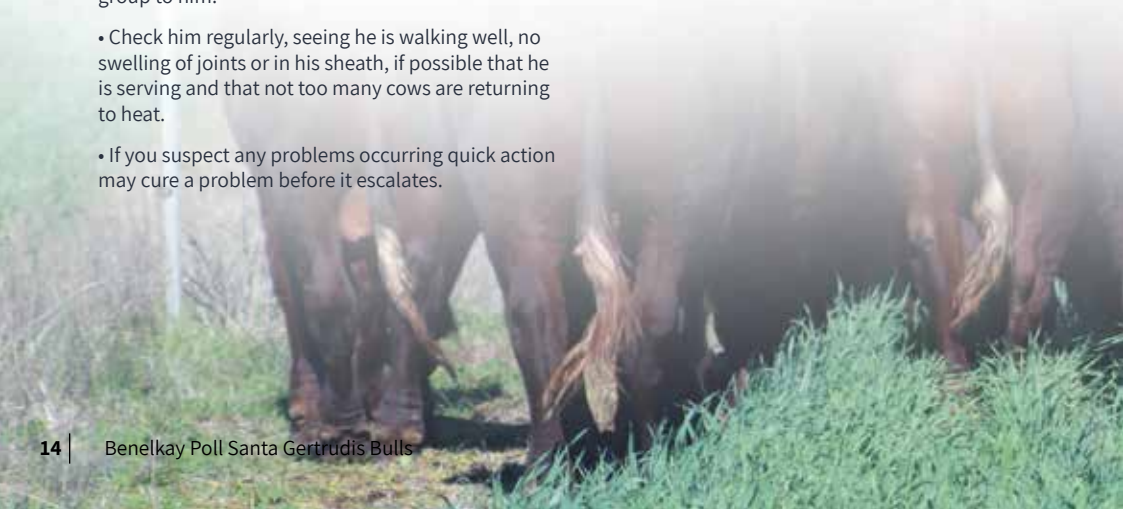
We have put a lot into getting your purchase ready with breeding and management and now it is up to you to continue to prepare your considerable investment for the future.

THE FOLLOWING ARE A FEW TIPS

- At auction sales, remember that possession is yours after the fall of the hammer.
- We recommend that you insure your bull - it is a new asset to your property.
- Pen bulls on the truck from different vendors / properties separately.
- Handle him quietly at all times, no buzzers have been used on these bulls.
- Have some cattle in the yard for company to run him with for a week or so to get acquainted to your property. All will be strange to him as he has been taken from his mates and even the water and feed will be different as well as your environment.
- Check the health treatments he has had and that they are appropriate to your area and treat with anything additional you think he might need after he has settled in.
- At joining it is preferable not to mate young bulls multiply with older sires, as they will not allow the young bulls near the cows and they could get injured.
- Try and get him to his selected group of cows preferably in a group with other cattle or bring the group to him.
- Check him regularly, seeing he is walking well, no swelling of joints or in his sheath, if possible that he is serving and that not too many cows are returning to heat.
- If you suspect any problems occurring quick action may cure a problem before it escalates.

- Have a spare bull or bulls available to cover any break downs, do not give the young bull increased numbers of females to cover other breakdowns within the herd. Also young heifers may be in season for less time than cows and you will need more bulls to cover them.
- After the joining remove him and give him any health treatments such as for internal and external parasites and any vaccinations appropriate to your conditions.
- Give him every chance to grow out and develop after his first joining as your Santa bull will continue to grow and be cutting teeth, for at least a further twelve months.
- Annual pre joining vet examination will help with your next joining results.
- Bulls are a large investment for any breeding herd and they have a major effect on herd fertility. A little time and attention to detail to make sure they are fit, free from disease and actively working is well worthwhile and can deliver huge results to our agricultural businesses.

If you have any queries or problems please contact us as soon as you can so that we can assist you.





BREEDNG OBJECTIVES / Our breeding objective is to produce structurally correct moderate framed Polled Santas, balanced in fertility traits, weight traits, muscling and fat. Always mindful of maintaining an easy doing functionally efficient and fertile herd, with a broad genetic base to meet the current market needs of our clients and to improve the profit in their operations.

TO ACHIEVE OUR OBJECTIVES WE EMPLOY THE FOLLOWING STRATEGIES:

FERTILITY

- We don't pamper the stud cow herd; they are run on a commercial basis, in conjunction with cropping. This strategy indicates the cattle that will perform especially for fertility and gives clients confidence that the sires they purchase will perform in any climate.
- Semen and morphology test bulls and use as high a quality tested bull that meets our breeding objectives.
- Maintain soft fine haired cattle. These perform better in our climate and are more fertile.
- Select for cattle with above breed average fat. Fat is important for carcass coverage (MSA), doing ability leading into better fertility.
- Keep a balance between milk and fertility traits.
- Identify sires that have excessive birth weights.
- Select for cattle with tidier sheaths. This gives us much better fertility in both bulls and females also complying better with the MSA requirements.

MATURITY/MEAT QUALITY

- Select for moderate framed cattle with above breed average young growth.
- Select cattle that are able to perform well in a range of markets for clients.
- Our style of Santa Gertrudis cattle are able to target the vealer market, the feed lot and all the way through to the bullock trade.
- Select for quiet temperament for handling and meat quality issues.

INFORMED DECISIONS

- All cattle are performance recorded for as many traits as we can manage, keeping in mind commercial considerations. E.g. we don't scrotal score all male calves as we castrate a large number of bull calves.
- Performance data is used in mating decisions to produce balanced progeny.



STUD FOCUS

RO

With a strong genetic base of 400 classified stud cows. Benelkay is well placed to breed cattle to suit the modern-day commercial cattleman. With a strong emphasis on poll cattle that can have the ability to enhance the carcass traits in the stud and commercial cattle industry. We have selected and used only poll sires for over Forty years giving us a large genetic poll base to draw from. This year's sale team will have about half Homozygous (PP) bulls represented which gives the industry an opportunity to be able to purchase sires to fast track their own herds towards poll genetics. These results will be on the supplementary sheet or ring us presale.

The Benelkay stud is run on a commercial basis with no favouritism. With years of work going into the fertility, temperament, and the need to breed cattle that are soft, easy doing and are saleable all year round. We have found this style of cattle can compete with and better other breeds but still retain the excellent attributes of the Santa Gertrudis Breed. We have noted over time that moderate cows have the best fertility, and we can move a little each way with size to suit the needs of most beef markets. Our entire herd is performance recorded, all stud and commercial cows with Santa Gertrudis Group Breedplan. We find Breedplan, a useful tool in our herd selection, as well as using visual assessment. Both tools enable us to make fast gains in the desired traits we believe our herd needs to be achieving.

Sires in the past years making an impact on our stud's direction, have been, Sanford Vale Juggler (P). Wave Hill F73 (PS), Wave Hill Napperby (P), Bullamakinka H82 (PS) and Bullamakinka Dreamtime (P). Also, SuJo First Class (P) who proved to be a wonderful sire, taking the stud forward in the direction, we believe the industry needed to be heading. His progeny has had a huge impact within the stud, and we are still benefiting from his strong bloodlines. Last but definitely not least, the influence of Yarrawonga M134 (PS) and Burrumurra Boss 152 (PP) who have both created their own history within the stud in the last few seasons with outstanding results.

Every year we try to bring new genetics into the sale for our clients. This year we are proud to introduce new Sires Yarrawonga Tic Toc T626 (P), Doorabeeba Sentry S024 (PP) and Benelkay Showtime S204 (P) introducing some fresh genetics into our herd as well as contributing to the sale team very positively.

SIRE PROFILES



SIRE OF LOTS 7,8,11,16,22,38

STRATHMORE SENATOR S498 (P)

Strathmore Senator was selected as a Sire for his strong breed phenotype and sheer scale, and he has continued to grow into what we expected as he was purchased as a very young bull. He is producing progeny with dark coats and strong Breed Type with good looseness of skin but still having good navels and tight sheaths on his offspring. He was purchased with no EBVs, but as we gain more data, he is quickly becoming a leader in many traits. Senator is quickly becoming our go to Sire in the stud.

200	400	600	MAT	MILK	SS	CWT	EMA	RIB	RUMP	RBV	IMF
+17	+19	+29	+33	-2	+0.3	+10	+3.4	+0.5	+0.7	+0.3	+0.4
86%	79%	80%	71%	43%	71%	64%	53%	58%	57%	42%	58%

SIRE PROFILES



SIRE OF LOT 26

YARRAWONGA QUICKSILVER Q680 (P)

Purchased at the Yarrawonga Waco Annual Bull Sale in 2020. At twenty months he weighed 784kgs, 40cm scrotal, 1.18 DWG, EMA 128, Rib and Rump fats of 12 and 9, as a bonus he was a homozygous Poll (PP). He has developed into a big strong sire with plenty of length and scale. We were attracted to his sire Restdown 378 (P) when Yarrawonga purchased him and thought we would purchase one of his sons. He is breeding very dark coated stock with strong breed type; Top priced son to date is Benelkay Underline U022 (PS) selling to Birrimba Santa Gertrudis Stud Nyngan. A Sire that can really produce some punch in his offspring, with strong breed phenotype.

200	400	600	MAT	MILK	SS	CWT	EMA	RIB	RUMP	RBY	IMF
+25	+37	+45	+41	+2	+2.1	+18	+2.9	+0.5	0.0	+0.4	-0.5
87%	85%	86%	82%	63%	84%	69%	61%	69%	68%	52%	68%

SIRE PROFILES



SIRE OF LOTS 9,15,19,20,21

CREE PAPALII S146 (PS)

Cree S146, is an eye appealing long bodied Sire, with good early growth indicators, low Mature Cow weight, early puberty and high EMA EBV figures. He was purchased as a heifer bull and used for two seasons as that and has now been moved into our cow herd as his physical size has made him impractical for heifer joining. Very structurally correct he is producing calves with strong growth and good length and thickness. His second drop of calves will be sold in our 2026 Annual Bull Sale. His pedigree is packed full of herd improving Sires and cow lines.

200	400	600	MAT	MILK	SS	CWT	EMA	RIB	RUMP	RBV	IMF
+17	+23	+40	+37	0	+1.7	+18	+3.5	-0.2	-1.1	+1.4	-0.6
85%	83%	84%	77%	60%	80%	70%	64%	69%	69%	57%	69%

SIRE PROFILES



SIRE OF LOTS 4,5,13,27

DOORABEEBA SENTRY S024 (PP)

Sentry a Homozygous poll, was the top priced bull, when purchased at the Murgona Santa Gertrudis Invitational Bull Sale Taroom in 2023. Weighing 1086kgs at 27months with a DWG of 1.29kg, Scrotal of 43cm and an EMA of 138, Rib and Rump fats of 14 and 25. IMF of 6.6 and strong morphology, he ticked a lot of boxes for our program, being bred from a long line of proven strongly performing genetics. Sentry has proven to be a solid purchase and is producing consistently good all-round cattle. This is the first drop of sons in this year's sale team, and they have stood up well within the draft.

200	400	600	MAT	MILK	SS	CWT	EMA	RIB	RUMP	RBY	IMF
+17	+34	+39	+44	-2	+0.2	+18	+2.9	0.0	+0.2	+0.4	-0.1
80%	84%	80%	71%	45%	71%	64%	53%	57%	56%	42%	56%

SIRE PROFILES



SIRE OF LOTS 3,12,14,30

YARRAWONGA TIC TOC T626 (P)

Tic Toc was purchased at Lot 3, in the 2023 Yarrawonga Bull Sale. We were attracted to his Sire Strathmore Jubilee, who sold as the top priced bull at the 2020 Strathmore Sale. The success of the breeding going back on his Dam's side was also something we were attracted to. Selected for his sheer scale and growth pattern we were also attracted to his tropical content and his finishing ability and felt this was the pick of the Jubilee sons on offer. At 23 months he weighed 1010 kgs, had an EMA of 146, Fats of 13/10 IMF 5.7, Scrotal 39 cm and a 90 percent morphology. He has delivered all of what we thought he would breed, replicating himself in his progeny. The more data we collect on him justifies this, with him becoming a trait leader in growth EBVS and EMA in the top 1percent. Tic Toc is a Sire you will see with a lot more progeny represented in our sales going forward.

200	400	600	MAT	MILK	SS	CWT	EMA	RIB	RUMP	RBY	IMF
+23	+28	+45	+49	+1	+0.9	+22	+5.5	-1.0	-1.0	-	-0.2
79%	81%	77%	68%	38%	63%	61%	47%	50%	49%	-	50%

SIRE PROFILES



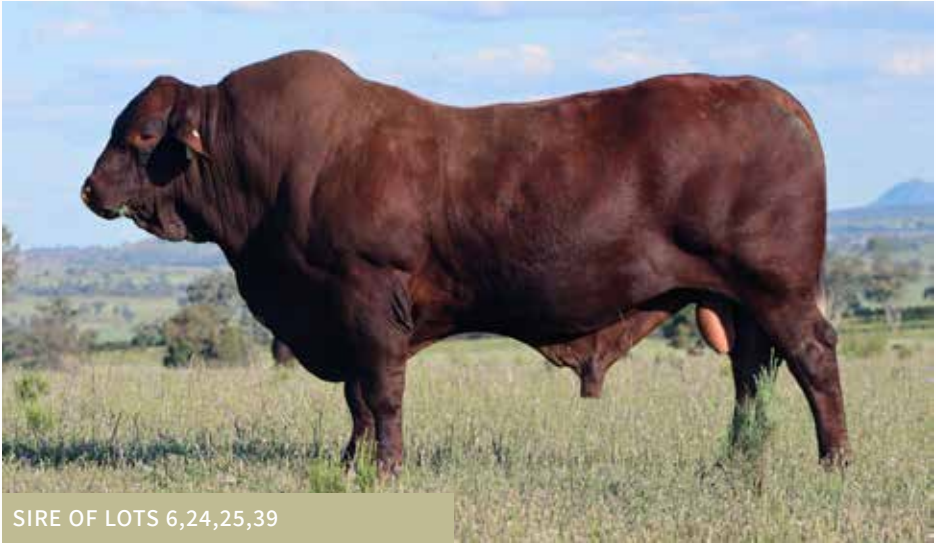
SIRE OF LOTS 2,17,32

BULLAMAKINKA REMINGTON R294 (P)

Remington was purchased at the 2020 Santa Central sale as a led bull. We were attracted to him for his strong thickness width over the top line, length and his dark red coat type. His temperament is impeccable and is a pleasure to work with as are his progeny. He demonstrates strong EMA and IMF, what we were after as well as good scrotal size. We are happy with the quality and evenest of his progeny, breeding well above himself. His top priced son to date sold to Hood Partnership for \$16,000 in 2024.

200	400	600	MAT	MILK	SS	CWT	EMA	RIB	RUMP	RBV	IMF
+7	+15	+29	+14	0	-0.3	+11	+2.5	-0.9	-1.1	+0.8	-0.3
90%	86%	85%	81%	52%	78%	68%	56%	61%	61%	45%	62%

SIRE PROFILES



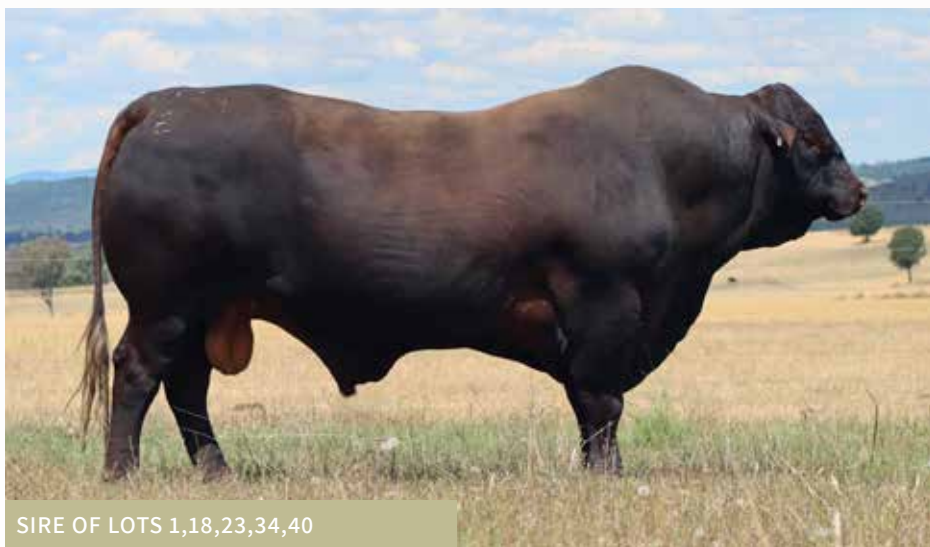
SIRE OF LOTS 6,24,25,39

NIOA QUARTERMASTER Q34 (P)

Quartermaster was purchased at the 2020 Nioa on Property Bull Sale. We were impressed with this bull's style and his genetics. Being an (AI) son of the prolific sire Rosevale Jackeroo and out of a Glen Oaks show heifer. His BreedPlan figures for Rib and Rump fat were strongly positive which was also a contributing factor. He is breeding cattle with strong phenotype and is throwing on his ability to lay down strong fat coverage, we are happy with his overall contribution to the stud. He has produced progeny that his EBV figures have indicated he would, strong growth and scale with good fat figures.

200	400	600	MAT	MILK	SS	CWT	EMA	RIB	RUMP	RBV	IMF
+24	+26	+49	+46	-1	+0.2	+17	+4.2	+2.1	+2.6	+0.6	-0.1
89%	88%	88%	84%	69%	84%	75%	69%	74%	73%	62%	73%

SIRE PROFILES



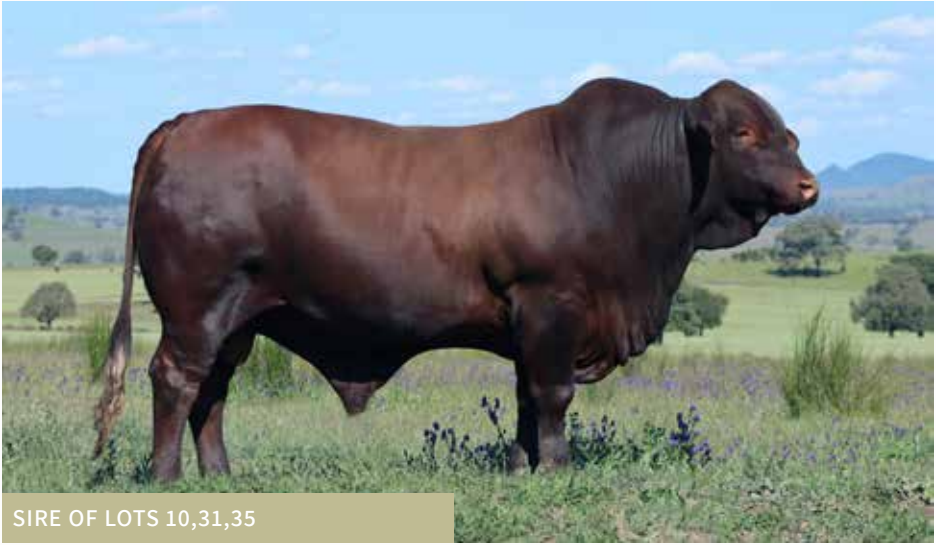
SIRE OF LOTS 1,18,23,34,40

DANGARFIELD EL NINO E119 (PP)

El Nino was purchased in 2023 from Dangarfield as a heifer bull at their annual Sale. He has been perfect for this job for the last two seasons. His temperament is impeccable and so are his progeny. He holds a strong dark red skin type and has developed into a moderate size Sire that carries extreme length and good finishing ability, working very well as a heifer bull. He also throws a very tidy sheath and navel with the ability to do this and retain looseness for growth. His top priced son, Benelkay UFO U218 (PP) sold for \$16,000 to Calonbah Santa Gertrudis Stud in 2025. There will be a strong representation of his sons in the 2027 sale as they are very promising yearling weaners.

200	400	600	MAT	MILK	SS	CWT	EMA	RIB	RUMP	RBY	IMF
-7	-4	-5	-5	-2	-1.0	-4	+1.5	+1.5	+1.7	+0.7	+0.4
78%	79%	79%	69%	39%	73%	62%	52%	59%	58%	43%	59%

SIRE PROFILES



SIRE OF LOTS 10,31,35

BENELKAY SHOWTIME S204 (P)

Showtime was retained as a sire from the 2021 year drop for his softness as well as his good length and bone. He has developed into an impressive mature bull and is breeding very consistently and true to type. He is a sire who carries natural doing ability with positive Rib and Rump Fat EBVS. On the maternal side his mother was a strong breeder with five out of her 6 calves classifying and four of them making the sale team. Being a Burrumurra Boss son, we must be mindful of how we join him as we have plenty of similar genetics, but he is proving to be a very valuable bull from what he is producing. He has a select number of sale bulls in this years sale 2026.

200	400	600	MAT	MILK	SS	CWT	EMA	RIB	RUMP	RBV	IMF
-1	-5	-3	0	+1	-0.5	+1	+3.1	+0.8	+0.8	+1.2	+0.1
79%	82%	80%	75%	59%	74%	67%	56%	61%	61%	48%	62%

SIRE PROFILES



SIRE OF LOTS 28,29,33

STRATHMORE RIPPER R280 (PS)

Ripper was purchased as a young bull in the 2021 Strathmore on Property Bull Sale at Blackall for \$40,000. We were attracted to him for his out cross genetics overall thickness, quiet disposition and Sire appeal. He had large EMA and IMF figures that we were also attracted to as well as a strong morphology result. Ripper has worked well in the stud producing moderate sized progeny, that carry strong fat coverage and are easy doing fertile cattle. He is represented by a number of these quicker maturing style bulls in his year's sale draft. His cattle carry the quiet disposition that Ripper has.

200	400	600	MAT	MILK	SS	CWT	EMA	RIB	RUMP	RBV	IMF
+5	+6	+13	-4	+1	+1.0	+7	+4.1	-0.3	-0.1	+1.2	-0.3
84%	84%	81%	75%	43%	78%	64%	54%	62%	61%	45%	61%

SIRE PROFILES



SIRE OF LOTS 36,37

BENELKAY SNIPER S266 (PS)

Sniper was kept as a back up bull from the 2023 Sale team and later sold privately. The results of this limited joining have been very pleasing with many above average progeny being produced. Two top priced Sniper sons sold for \$16,000 to Landsborough Santa Gertrudis Stud Winton QLD, and Kuloomba Gertrudis Santa Stud Elmore Vic. He has a strong representation of sons in this year's sale team. This should be no surprise to us, being an M134 son out of a strong maternal female line.

200	400	600	MAT	MILK	SS	CWT	EMA	RIB	RUMP	RBY	IMF
+12	+26	+18	+16	-4	+1.1	+10	-1.1	-0.2	-0.7	-0.8	-0.1
79%	81%	81%	74%	60%	78%	67%	59%	65%	65%	52%	66%

LOT 1

BENELKAY VANGUARD V010 (PS)

ID NO:	TATTOO	D.O.B	AGE	S BULL
BEN24MV010	V010	10/3/2024	29 MONTHS	



DANGARFIELD YAPUNYAH Y232 (P)
SIRE; DANGARFIELD EL NINO E119 (PP)
 DANGARFIELD 8041 (P)

BENELKAY HALFBACK H076 (PS)
DAM; BENELKAY M031(P)
 BENELKAY 1691 (P)

WEIGHT	DWG	SS	P8/RIB	EMA	IMF	HORN/POLL	MOTILE	MOPH

200	400	600	MAT	MILK	SS	CWT	EMA	RIB	RUMP	RB Y	IMF
-5	+1	-3	-10	0	-1.2	-2	+0.2	+0.2	+0.5	+0.1	-0.1
68%	66%	66%	60%	46%	60%	52%	44%	49%	49%	36%	50%

Vanguard (PS), Dark skinned long bodied young sire with a strong muscle pattern. Strong growth and bone in this powerful bull. Dam M031 (P) has had six calves with two classifying, Vanguard and a female retained in the stud.

Purchaser;

\$

BENELKAY V012 (P)

ID NO:	TATTOO	D.O.B	AGE	H BULL
BEN24MV012	V012	25/5/2024	26 MONTHS	



GLENN OAKS NASHVILLE N128 (PS)
SIRE; BULLAMAKINKA REMINGTON R294 (P)
 BULLAMAKINKA K31 (P)

BURRAMURRA BOSS 152 (PP)
DAM; BENELKAY P103 (P)
 BENELKAY J273 (P)

WEIGHT	DWG	SS	P8/RIB	EMA	IMF	HORN/POLL	MOTILE	MOPH

200	400	600	MAT	MILK	SS	CWT	EMA	RIB	RUMP	RB Y	IMF
+10	+8	+20	+22	+4	0	+10	+2.3	-0.1	-0.2	+0.7	-0.2
69%	67%	67%	63%	47%	61%	53%	45%	49%	49%	36%	50%

V012 (P), Is a bull with plenty of scale, length and strong bone and is a similar style bull to lot 1. Would compliment any commercial herd and should breed beautiful females like his Sire Bullamakinka Remington. Dam P103 (P), has had four calves to date.

LOT 3

BENELKAY VICTORY V106 (PS)

ID NO:	TATTOO	D.O.B	AGE	S BULL
BEN24MV106	V106	18/10/2024	22 MONTHS	



STRATHMORE JUBILEE Q362 (PS)
SIRE; YARRAWONGA TIC TOC T626 (P)
 YARRAWONGA L785

BURRAMURRA BOSS 152 (PP)
DAM; BENELKAY S217 (P)
 BENELKAY F17 (P)

WEIGHT	DWG	SS	P8/RIB	EMA	IMF	HORN/POLL	MOTILE	MOPH

200	400	600	MAT	MILK	SS	CWT	EMA	RIB	RUMP	RB Y	IMF
+12	+15	+25	+23	+2	+0.7	+11	+3.2	-0.2	-0.5	+1.2	-0.1
67%	67%	66%	61%	45%	59%	53%	44%	49%	48%	35%	49%

Victory (PS), Strong young masculine Sire. Naturally docile natured bull with good growth, softness, length and good doing ability. First of the Yarrowonga Tic Toc sons to be offered and he carries a lot of the attributes of this Sire. Strong EBVs for his growth figures, EMA and Retail Beef Yield. Dam S217 (P), has had two calves and had Victory as a heifer. She has developed into a large volume breeder with strong breed type.

Purchaser;

\$

BENELKAY VOLKSWAGEN V200 (PP)

ID NO:	TATTOO	D.O.B	AGE	S BULL
BEN24MV200	V200	24/10/2024	21 MONTHS	



HARDIGREEN PARK VICTORY N56 (PS)
SIRE; DOORABEEBA SENTRY S024 (PP)
 DOORABEEBA N059 (P)

BENELKAY LEXUS 1524 (PP)
DAM; BENELKAY K027 (P)
 BENELKAY KAELYN (P)

WEIGHT	DWG	SS	P8/RIB	EMA	IMF	HORN/POLL	MOTILE	MOPH

200	400	600	MAT	MILK	SS	CWT	EMA	RIB	RUMP	RB Y	IMF
+20	+37	+47	+49	+4	+1.9	+18	+1.6	-0.3	-0.4	0	-0.4
68%	69%	69%	62%	49%	67%	54%	47%	54%	53%	40%	54%

Volkswagen (PP), Homozygous Poll Sire. First of the sons on offer by Doorabeeba Senty. Young Sire that carries strong breed type with some real growth and style about him. Strong Growth and Carcase Weight EBVs, all above the Top 10%. Dam K027 (P) is a valuable old breeder, having eight calves with four classifying. One daughter is breeding well in the stud and three sale bulls.

LOT 5

BENELKAY VOUGE V242 (PP)

ID NO:	TATTOO	D.O.B	AGE	S BULL
BEN24MV242	V242	28/10/2024	21 MONTHS	



HARDIGREEN PARK VICTORY N56 (PS)
SIRE; DOORABEEBA SENTRY S024 (PP)
 DOORABEEBA N059 (P)

BULLAMAKINKA H82 (PS)
DAM; BENELKAY K097 (P)
 BENELKAY F87 (P)

WEIGHT	DWG	SS	P8/RIB	EMA	IMF	HORN/POLL	MOTILE	MOPH

200	400	600	MAT	MILK	SS	CWT	EMA	RIB	RUMP	RB Y	IMF
+17	+26	+33	+46	+2	-1.2	+19	+3.2	-0.7	-0.7	+1.0	-0.5
68%	69%	69%	63%	48%	67%	55%	47%	54%	53%	40%	54%

Vouge (PP), Homozygous Poll Sire with some real grunt. Heavy boned with good depth of flank and hindquarter. Very well balanced, strong masculinity and breed phenotype. Strong Growth and Carcass Weight EBVs, all above the Top 20%. Dam K097 (P), valued breeder, has had seven calves, with five classifying. Three daughters breeding well in the stud herd and one other sale bull selling to the O’Gorman Family.

Purchaser;

\$

BENELKAY VENTUROUS V184 (PP)

ID NO:	TATTOO	D.O.B	AGE	S BULL
BEN24MV184	V184	20/10/2024	22 MONTHS	



ROSEVALE JACKAROO J566 (P)
SIRE; NIOA QUARTERMASTER Q34 (P)
 GLENN OAKS MATILDA M84 (P)

MACAIRE HALLMARK H37 (PS)
DAM; BENELKAY N099 (P)
 BENELKAY H029 (P)

WEIGHT	DWG	SS	P8/RIB	EMA	IMF	HORN/POLL	MOTILE	MOPH

200	400	600	MAT	MILK	SS	CWT	EMA	RIB	RUMP	RB Y	IMF
+23	+29	+47	+50	+2	-0.5	+17	+4.7	+1.8	+2.3	+0.8	0
71%	71%	71%	66%	55%	68%	57%	51%	56%	56%	45%	57%

Venturous (PP) Homozygous Poll Sire. Interesting young bull with strong finishing ability, carrying plenty of softness with the ability to lay down fat. Strong Growth EBVs, that are all in the top 5% along with his EMA, Rib and Rump Fats. His Breeding Production Index is + \$74 and his Terminal Sire Index at + \$67. Dam N099 (P), has had six calves with four classifying to date, two females breeding well within the herd and one other sale bull.

Purchaser;

\$

LOT 7

BENELKAY VALENCIA V026 (PS)

ID NO:	TATTOO	D.O.B	AGE	S BULL
BEN24MV026	V026	4/9/2024	23 MONTHS	



STRATHMORE MAESTRO M354 (AI)(PP)
SIRE; STRATHMORE SENATOR S498 (P)
 STRATHMORE L355

BURRAMURRA BOSS 152 (PP)
DAM; BENELKAY S221 (P)
 BENELKAY F61 (P)

WEIGHT	DWG	SS	P8/RIB	EMA	IMF	HORN/POLL	MOTILE	MOPH

200	400	600	MAT	MILK	SS	CWT	EMA	RIB	RUMP	RB Y	IMF
+20	+22	+42	+40	+2	+0.9	+16	+3.8	0	+0.2	+0.6	+0.2
70%	67%	68%	62%	47%	66%	54%	46%	52%	51%	40%	54%

Valencia (PS) Is a heifers calf, and the first son to be offered by Strathmore Senator who is breeding well within the stud. Strong powerful young Sire with good breed phenotype and has been a standout since he was a weaner. Dark coated, neat sheathed, strong constitution with great finishing ability. He carries positive Rib and Rump Fat EBVs, with strong Growth and EMA EBVs. Dam S221 (P) has had two calves to date and is PTIC again.

Purchaser;

\$

BENELKAY VOLVO V028 (PP)

ID NO:	TATTOO	D.O.B	AGE	S BULL
BEN24MV028	V028	22/9/2024	22 MONTHS	



STRATHMORE MAESTRO M354 (AI) (PP)
SIRE; STRATHMORE SENATOR S498 (P)
 STRATHMORE L355

BENELKAY QUICKSHOT (PP)
DAM; BENELKAY S093 (P)
 BENELKAY P183 (P)

WEIGHT	DWG	SS	P8/RIB	EMA	IMF	HORN/POLL	MOTILE	MOPH

200	400	600	MAT	MILK	SS	CWT	EMA	RIB	RUMP	RB Y	IMF
+24	+31	+42	+36	+1	+0.4	+17	+3.3	+0.6	+0.8	+0.2	0
69%	65%	67%	62%	45%	65%	53%	44%	51%	50%	38%	52%

Volvo (PP) Homozygous Poll, Strong Sires outlook, that Senator stamps on his sons. Carries impressive length and depth of flank with good bone and a fine tropical skin type. Strong Growth, EMA and Rib and Rump Fat EBVs. Dam S093 (P) had Volvo as a heifer and has had one other calf and is PTIC again.

LOT 9

BENELKAY VULCAN V096 (P)

ID NO:	TATTOO	D.O.B	AGE	S BULL
BEN24MV096	V096	14/9/2024	23 MONTHS	



CREE PAPALII P002 (ET)(AI)(PS)
SIRE; CREE PAPALII S146 (PS)
 CREE P035 (P)

BENELKAY QBEX Q072 (PP)
DAM; BENELKAY S083 (P)
 BENELKAY P191 (P)

WEIGHT	DWG	SS	P8/RIB	EMA	IMF	HORN/POLL	MOTILE	MOPH

200	400	600	MAT	MILK	SS	CWT	EMA	RIB	RUMP	RB Y	IMF
+4	+10	+9	+22	-5	+0.6	+5	+1.0	+0.4	-0.1	+0.4	+0.1
70%	67%	69%	63%	49%	67%	55%	47%	54%	53%	42%	55%

Vulcan (P), Stylish type of a bull, Soft with good fat coverage, muscle content and width over the top line coupled with a herd improving sheath. Dam S083 (P) had Vulcan as a heifer, has had one other calf and is PTIC again. S083 is a soft moderate style of a breeder.

Purchaser;

\$

BENELKAY VUNIVALU V236 (P)

ID NO:	TATTOO	D.O.B	AGE	S BULL
BEN24MV236	V236	18/10/2024	22 MONTHS	



STRATHMORE MAURICE M684 (PS)
SIRE; STRATHMORE RIPPER R280 (PS)
 MULTIPLE DAM

YARRAWONGA M134 (PS)
DAM; BENELKAY Q069
 BENELKAY E19 (P)

WEIGHT	DWG	SS	P8/RIB	EMA	IMF	HORN/POLL	MOTILE	MOPH

200	400	600	MAT	MILK	SS	CWT	EMA	RIB	RUMP	RB Y	IMF
+1	0	+1	-22	-2	+0.5	+1	+2.6	+0.6	+0.7	+0.6	-0.1
69%	69%	69%	63%	46%	67%	55%	47%	54%	53%	41%	54%

Vunivalu (P), Thick set carcase sire with a strong wide top line and heavy bone. Strong EMA and positive Rib and Rump Fat EBVs. Dam Q069 (P) has had four calves with Vunivalu being her first sale bull.

BENELKAY VITTORIA V024 (PP)

ID NO:	TATTOO	D.O.B	AGE	S BULL
BEN24MV024	V024	27/9/2024	22 MONTHS	



STRATHMORE MAESTRO M354 (AI)(PP)
SIRE; STRATHMORE SENATOR S498 (P)
 STRATHMORE L355

BURRAMURRA BOSS 152 (PP)
DAM; BENELKAY S239 (P)
 BENELKAY E153 (P)

WEIGHT	DWG	SS	P8/RIB	EMA	IMF	HORN/POLL	MOTILE	MOPH

200	400	600	MAT	MILK	SS	CWT	EMA	RIB	RUMP	RB Y	IMF
+11	+12	+19	+29	-1	-0.3	+7	+3.3	+0.6	+0.7	+0.9	+0.1
70%	67%	68%	63%	47%	66%	55%	46%	52%	52%	40%	54%

Vittoria (PS), Dark coated long bodied bull. Great shaped animal with easy finishing ability, displays a strong muscle pattern and a good constitution. Strong EMA and Rib and Rump Fat EBVs. Dam S239 (P) had Vittoria as a heifer, has had one other calf and is PTIC again.

Purchaser;

\$

BENELKAY VIRBAC V158 (P)

ID NO:	TATTOO	D.O.B	AGE	S BULL
BEN24MV158	V158	27/11/2024	20 MONTHS	



STRATHMORE JUBILEE Q362 (PS)
SIRE; YARRAWONGA TIC TOC T626 (P)
 YARRAWONGA L785

BULLAMAKINKA DREAMTIME D62 (P)
DAM; BENELKAY M147 (P)
 BENELKAY 1363 (P)

WEIGHT	DWG	SS	P8/RIB	EMA	IMF	HORN/POLL	MOTILE	MOPH

200	400	600	MAT	MILK	SS	CWT	EMA	RIB	RUMP	RB Y	IMF
+23	+30	+47	+42	+2	+1.5	+19	+4.2	+0.9	+1.0	+0.6	+0.1
68%	67%	68%	62%	48%	64%	54%	45%	50%	50%	36%	51%

Virbac (P), Strong masculine well balanced Tic Toc son. Carries exceptional depth with a wide top line and muscling throughout his hindquarters. Under the top 10 % for all his Growth and Carcase Weight EBVs. Top 3% for his EMA with positive Rib and Rump Fat Figures. +\$61 and +\$63 for his Terminal Index and Breeding Production Index. Dam M147 (P) large framed fertile breeder, has had six calves recorded. All have classified with four females breeding in the stud herd, Virbac being her first sale bull and a weaner heifer.

Purchaser;

\$

LOT 13

BENELKAY VITICULTURE V278 (P)

ID NO:	TATTOO	D.O.B	AGE	S BULL
BEN24MV278	V278	18/11/2024	20 MONTHS	



HARDIGREEN PARK VICTORY N56 (PS)
SIRE; DOORABEEBA SENTRY S024 (PP)
 DOORABEEBA N059 (P)

BURRAMURRA BOSS 152 (PP)
DAM; BENELKAY Q191 (P)
 BENELKAY F79 (P)

WEIGHT	DWG	SS	P8/RIB	EMA	IMF	HORN/POLL	MOTILE	MOPH

200	400	600	MAT	MILK	SS	CWT	EMA	RIB	RUMP	RB Y	IMF
+21	+28	+44	+54	0	0	+23	+5.2	-0.3	-0.4	+1.7	-0.7
68%	69%	69%	63%	47%	66%	55%	46%	53%	52%	39%	53%

Viticulture (P), Powerfully built, long carcass bull with a neat sheath. Very structurally correct, free moving bull. I really admire the balance of this bull as he continues to grow and develop. Strong Sires outlook. All his Growth Figures are in the Top 10% along with his Carcass Weight, EMA and Retail Beef Yield being in the top 3%. His Terminal Index and Breeding Production Index sit at +\$55 and +\$52. Dam Q191 (P) is known here as (Big Bird) due to her scale and has had four calves, two classifying and Viticulture being her only sale bull.

Purchaser;

\$

BENELKAY VODAFONE V172 (PS)

ID NO:	TATTOO	D.O.B	AGE	S BULL
BEN24MV172	V172	22/10/2024	21 MONTHS	

STRATHMORE JUBILEE Q362 (PS)
SIRE; YARRAWONGA TIC TOC T626 (P)
 YARRAWONGA L785

BENELKAY GYRAL G152 (P)
DAM; BENELKAY Q025 (P)
 BENELKAY L037

WEIGHT	DWG	SS	P8/RIB	EMA	IMF	HORN/POLL	MOTILE	MOPH

200	400	600	MAT	MILK	SS	CWT	EMA	RIB	RUMP	RBY	IMF
+24	+39	+51	+55	+4	+1.1	+23	+3.6	-1.0	-1.2	+0.9	-0.1
68%	68%	68%	62%	45%	65%	53%	45%	52%	51%	38%	52%

Vodafone (PS), Young Sire with plenty to like about him, packed with performance and growth. Great shaped bull with easy finishing ability, a strong muscle pattern and strong constitution. Top 1% or 2% for all his Growth, Carcase Weight and Milk EBVs. Top 15% for his EMA EBV. Terminal Index at +\$67. Dam Q025 (P), has had five calves with one other sale bull selling in 2024.

Purchaser;

\$



LOT 15

BENELKAY VERSATILE V044 (PP)

ID NO:	TATTOO	D.O.B	AGE	S BULL
BEN24MV044	V044	25/10/2024	21 MONTHS	



CREE PAPALII P002 (ET)(AI)(PS)
SIRE; CREE PAPALII S146 (PS)
 CREE P035 (P)

YARRAWONGA QUICKSILVER Q680 (P)
 DAM; BENELKAY T021 (P)
 BENELKAY P059 (P)

WEIGHT	DWG	SS	P8/RIB	EMA	IMF	HORN/POLL	MOTILE	MOPH

200	400	600	MAT	MILK	SS	CWT	EMA	RIB	RUMP	RB Y	IMF
+14	+19	+28	+28	0	+1.3	+14	+1.5	-0.6	-1.4	+1.1	-0.7
69%	67%	68%	62%	47%	67%	53%	47%	54%	53%	42%	55%

Versatile (PP), Homozygous Poll. Heifers calf that has not missed a beat. Strong Sire outlook, stretchy long carcase bull with a very tight sheath. Good dark colour, fine hair type and structurally a very correct bull. Dam T021 (P) developing into a big deep bodied young cow, has had two calves and is PTIC.

Purchaser;

\$

BENELKAY VALLIANT V048 (P)

ID NO:	TATTOO	D.O.B	AGE	S BULL
BEN24MV048	V048	17/10/2024	22 MONTHS	



STRATHMORE MAESTRO M354 (AI)(PP)
SIRE; STRATHMORE SENATOR S498 (P)
 STRATHMORE L355

BURRAMURRA BOSS 152 (PP)
DAM; BENELKAY S185 (P)
 BENELKAY L007 (P)

WEIGHT	DWG	SS	P8/RIB	EMA	IMF	HORN/POLL	MOTILE	MOPH

200	400	600	MAT	MILK	SS	CWT	EMA	RIB	RUMP	RB Y	IMF
0	-10	-9	-13	-1	-0.2	-8	+0.4	+1.0	+1.4	-0.1	+0.4
71%	67%	69%	63%	47%	66%	55%	46%	52%	51%	40%	53%

Valliant (PS) Recommended for use on heifers if you want, very attractive bull that catches your eye. A more of a moderate style animal, neat sheath, naturally easy doing bull, plenty of lose skin and fat cover. Positive Rib and Rump EBVs in the top 20 %. Dam S185 (P), had Valliant as a heifer and has since had a crossbreed calf by mistake.

BENELKAY VALENTINE V240 (PP)

ID NO:	TATTOO	D.O.B	AGE	S BULL
BEN24MV240	V240	29/12/2024	19 MONTHS	



GLENN OAKS NASHVILLE N128 (PS)
SIRE; BULLAMAKINKA REMINGTON R294 (P)
 BULLAMAKINKA K31 (P)

MACAIRE HALLMARK H37 (PS)
DAM; BENELKAY P057 (P)
 BENELKAY M055 (P)

WEIGHT	DWG	SS	P8/RIB	EMA	IMF	HORN/POLL	MOTILE	MOPH

200	400	600	MAT	MILK	SS	CWT	EMA	RIB	RUMP	RB Y	IMF
+10	+21	+28	+13	0	-0.2	+11	+2.4	-0.7	-0.9	+0.7	-0.3
69%	68%	68%	64%	49%	62%	54%	46%	51%	50%	37%	51%

Valentine (PP), Homozygous Poll, Look at the age of this young Sire. He is only a baby but holds his own in the sale team. Good length and width over the top line with strong muscle expression and is soft and dark coated. Very interesting bull that has been a outstanding animal since he hit the ground. Well balanced EBVs but not excessive in any one area. Dam P059 (P) is an exceptionally fertile cow, has had six calves with four classifying. One other sale bull in 2024 and two females breeding in the stud herd.

Purchaser;

\$

BENELKAY VALARIS V304 (PP)

ID NO:	TATTOO	D.O.B	AGE	S BULL
BEN24MV304	V304	17/11/2024	21 MONTHS	



DANGARFIELD YAPUNYAH Y232 (P)
SIRE; DANGARFIELD EL NINO E119 (PP)
 DANGARFIELD 8041 (P)

BURRAMURRA BOSS 152 (PP)
DAM; BENELKAY Q009 (P)
 BENELKAY K097 (P)

WEIGHT	DWG	SS	P8/RIB	EMA	IMF	HORN/POLL	MOTILE	MOPH

200	400	600	MAT	MILK	SS	CWT	EMA	RIB	RUMP	RB Y	IMF
+10	+16	+18	+40	+3	-0.7	+12	+3.6	+0.5	+0.5	+1.2	0
67%	67%	68%	62%	46%	67%	53%	46%	54%	53%	40%	54%

Valaris (PP), Homozygous Poll, recommended for use on heifers or with the cows as he could do both. Young bull with strong length, dark fine skin type and a light sheath . Well balanced for his growth EBVs, Top 20% for his EMA EBVs. Positive Fat figures. Dam Q009 (P), lovely soft Boss female, has had five calves, three classifying, one female retained and a sale bull in 2024.

BENELKAY VERTEX V032 (P)

ID NO:	TATTOO	D.O.B	AGE	S BULL
BEN24MV032	V032	22/10/2024	21 MONTHS	



CREE PAPALII P002 (ET)(AI)(PS)
SIRE; CREE PAPALII S146 (PS)
 CREE P035 (P)

YARRABEE INFORCE 1459 (P)
DAM; BENELKAY T171 (P)
 BENELKAY P081 (P)

WEIGHT	DWG	SS	P8/RIB	EMA	IMF	HORN/POLL	MOTILE	MOPH

200	400	600	MAT	MILK	SS	CWT	EMA	RIB	RUMP	RB Y	IMF
+13	+15	+23	+29	0	+0.6	+11	+1.6	+0.3	-0.4	+0.6	-0.3
71%	68%	69%	63%	50%	67%	55%	48%	54%	54%	43%	55%

Vertex (P), A Cree S146 (PS) son not to be overlooked. Quite, thickset, powerful young Sire with strong finishing ability. Well balanced EBV Traits across all areas. Dam T171 (P) had Vertex as a heifer, has one other calf and now is PTIC.

Purchaser;

\$

BENELKAY VERIZON V034 (PP)

ID NO:	TATTOO	D.O.B	AGE	S BULL
BEN24MV034	V034	17/10/2024	22 MONTHS	

CREE PAPALII P002 (ET)(AI)(PS)
SIRE; CREE PAPALII S146 (PS)
 CREE P035 (P)

YARRABEE INFORCE 1459 (P)
DAM; BENELKAY T215 (P)
 BENELKAY Q005 (P)

WEIGHT	DWG	SS	P8/RIB	EMA	IMF	HORN/POLL	MOTILE	MOPH

200	400	600	MAT	MILK	SS	CWT	EMA	RIB	RUMP	RB Y	IMF
+8	+8	+20	+20	+4	+0.5	+10	+2.6	-0.3	-1.0	+1.4	-0.5
70%	67%	69%	63%	48%	67%	54%	47%	54%	53%	42%	55%

Verizon (PP), Homozygous Poll, There is plenty to like about this bull. Sires outlook, typical Cree son, wide over the top line with good thickness throughout. Milk EBVs in the top 3%. Retail Beef Yield in the top 10%. Dam T215 (P), had Verizon as a heifer and has had one other calf and is PTIC.

Purchaser;

\$



BENELKAY VALERO V040 (PP)

ID NO:	TATTOO	D.O.B	AGE	S BULL
BEN24MV040	V040	25/10/2024	21 MONTHS	



CREE PAPALII P002 (ET)(AI)(PS)
SIRE; CREE PAPALII S146 (PS)
 CREE P035 (P)

BURRAMURRA BOSS 152 (PP)
DAM; BENELKAY S179 (P)
 BENELKAY H065 (P)

WEIGHT	DWG	SS	P8/RIB	EMA	IMF	HORN/POLL	MOTILE	MOPH

200	400	600	MAT	MILK	SS	CWT	EMA	RIB	RUMP	RB Y	IMF
+16	+20	+33	+41	+2	-0.3	+20	+4.5	-1.1	-1.7	+2.1	-0.7
70%	68%	69%	64%	50%	67%	55%	48%	54%	54%	43%	55%

Valero (PP), Appealing style of Cree S146 son, broad muzzle with a strong head, carries through into his carcass as well, with a wide top line, good depth of hindquarter and a strong thick tail set. Strong growth EBVs, Top 1% for his Carcass Weight, EMA and Retail Beef Yield. Dam S179 (P) had Valero as her first calf and she has had two other calves after him.

Purchaser;

\$

BENELKAY VITAL V042 (PS)

ID NO:	TATTOO	D.O.B	AGE	S BULL
BEN24MV042	V042	20/10/2024	22 MONTHS	



STRATHMORE MAESTRO M354 (AI)(PP)
SIRE; STRATHMORE SENATOR S498 (P)
 STRATHMORE L355

YARRAWONGA QUICKSILVER Q680 (P)
DAM; BENELKAY T083 (P)
 BENELKAY Q121 (P)

WEIGHT	DWG	SS	P8/RIB	EMA	IMF	HORN/POLL	MOTILE	MOPH

200	400	600	MAT	MILK	SS	CWT	EMA	RIB	RUMP	RB Y	IMF
+28	+36	+50	+54	0	+1.5	+20	+4.2	+1.1	+1.2	+0.5	-0.1
70%	66%	67%	62%	44%	66%	53%	44%	51%	50%	38%	53%

Vital (PS). Growthy outstanding young Sire. Dark coloured coat type, neat sheath with that extra bit of finishing ability. Under the Top 5% for all his Growth EBVs, Top 10% for his EMA, Carcase Weight and +\$60 for his Terminal Index. He also carries positive fat EBVs that are backed up by his doing ability. Dam T083 (P) had Vital as a heifer and has had one other calf since, and is PTIC again.

LOT 23

BENELKAY VIAGRA V002 (P)

ID NO:	TATTOO	D.O.B	AGE	S BULL
BEN24MV002	V002	3/4/2024	28 MONTHS	



DANGARFIELD YAPUNYAH Y232 (P)
SIRE; DANGARFIELD EL NINO E119 (PP)
 DANGARFIELD 8041 (P)

BENELKAY NEWMAN N330 (PP)
DAM; BENELKAY S023 (P)
 BENELKAY M143 (P)

WEIGHT	DWG	SS	P8/RIB	EMA	IMF	HORN/POLL	MOTILE	MOPH

200	400	600	MAT	MILK	SS	CWT	EMA	RIB	RUMP	RB Y	IMF
+4	+8	+10	+17	+5	-1.0	+7	+3.3	+0.7	+0.7	+1.4	-0.2
67%	65%	66%	58%	43%	59%	51%	44%	50%	50%	38%	52%

Viagra (PS), Heifers calf. Dark coated appealing midmaturity style of a bull. Good length, neat sheath, with a strong carcass and top line. Balanced EBVs throughout, breeders recommendation for use over heifers. Dam S109 (P) has had two calves to date with Vigra being her first, and is PTIC again.

Purchaser;

\$

BENELKAY VLADAMIR V016 (P)

ID NO:	TATTOO	D.O.B	AGE	S BULL
BEN24MV016	V016	19/4/2024	28 MONTHS	



ROSEVALE JACKAROO J566 (P)
SIRE; NIOA QUARTERMASTER Q34 (P)
 GLENN OAKS MATILDA M84 (P)

YARRAWONGA QUICKSILVER Q680 (P)
DAM; BENELKAY S139 (P)
 BENELKAY N041 (P)

WEIGHT	DWG	SS	P8/RIB	EMA	IMF	HORN/POLL	MOTILE	MOPH

200	400	600	MAT	MILK	SS	CWT	EMA	RIB	RUMP	RB Y	IMF
+28	+35	+54	+73	+3	+0.8	+25	+4.7	-0.2	-0.4	+1.1	0
71%	68%	69%	64%	53%	64%	55%	49%	55%	54%	43%	55%

Vladimir (P), A bull with a tremendous amount of growth. Strong muscle pattern and width over the top, good muscle expression through his hind hindquarter. Under the Top 5% for all Growth Figures, EMA, Carcase Weight, +\$65 Terminal Index and +\$51 Breeders Production Index. Dam S139 (P) had Vladimir as a heifer and has had one other calf and is PTIC.

BENELKAY VELOCITY V018 (P)

ID NO:	TATTOO	D.O.B	AGE	S BULL
BEN24MV018	V018	20/4/2024	28 MONTHS	



ROSEVALE JACKAROO J566 (P)
SIRE; NIOA QUARTERMASTER Q34 (P)
 GLENN OAKS MATILDA M84 (P)

YARRABEE INFORCE 1459 (P)
DAM; BENELKAY S187 (P)
 BENELKAY L205 (P)

WEIGHT	DWG	SS	P8/RIB	EMA	IMF	HORN/POLL	MOTILE	MOPH

200	400	600	MAT	MILK	SS	CWT	EMA	RIB	RUMP	RB Y	IMF
+20	+20	+34	+43	+1	+1.0	+18	+3.6	+0.2	0	+1.0	-0.2
70%	68%	69%	65%	52%	63%	56%	49%	55%	54%	44%	56%

Velocity (P), Early maturity style of powerful Sire, thickset, width over the top line, good muscle expression has been evident from a young age. Wel balanced EBVs. Top 6% for his 200 Day Growth. Dam S187 (P) had Velocity as a heifer and has had one more calf and is PTIC.

Purchaser;

\$

BENELKAY VERSAILLES V020 (PP)

ID NO:	TATTOO	D.O.B	AGE	S BULL
BEN24MV020	V020	17/5/2024	27 MONTHS	



RESTDOWN 378 (P)
SIRE; YARRAWONGA QUICKSILVER Q680 (P)
 WACO J793

YARRAWONGA M134 (PS)
DAM; BENELKAY T001(P)
 BENELKAY J023 (P)

WEIGHT	DWG	SS	P8/RIB	EMA	IMF	HORN/POLL	MOTILE	MOPH

200	400	600	MAT	MILK	SS	CWT	EMA	RIB	RUMP	RB Y	IMF
+4	+10	+1	-11	-4	+0.7	-5	+0.7	+2.3	+2.5	-0.9	+0.5
70%	68%	69%	65%	51%	64%	55%	48%	54%	53%	41%	55%

Versailles (PP), Soft easy doing young bull, would make an ideal heifer bull. Very structurally correct. Rib and Rump Fat EBVs in the top 20%. Dam T001(P) has had two calves to date with Versailles being her first, and is PTIC again.

BENELKAY VANUATU V264 (PP)

ID NO:	TATTOO	D.O.B	AGE	S BULL
BEN24MV264	V264	20/10/2024	22 MONTHS	



HARDIGREEN PARK VICTORY N56 (PS)
SIRE; DOORABEEBA SENTRY S024 (PP)
 DOORABEEBA N059 (P)

YARRAWONGA M134 (PS)
DAM; BENELKAY R059
 BENELKAY J021(P)

WEIGHT	DWG	SS	P8/RIB	EMA	IMF	HORN/POLL	MOTILE	MOPH

200	400	600	MAT	MILK	SS	CWT	EMA	RIB	RUMP	RB Y	IMF
+6	+14	+9	+2	-3	-0.6	+5	+0.6	-0.1	-0.1	0	-0.3
67%	68%	68%	62%	46%	65%	54%	45%	52%	51%	38%	52%

Vanuatu (PP), Good type of Sentry bull, strong length, neat underline, with plenty of width, and a darker coat type. Dam R059, is an outstanding young breeder and is a standout Yarrowonga M134 cow. She has had three calves with Vanuatu being her first sale bull.

Purchaser;

\$

BENELKAY VENEZUELA V268 (PS)

ID NO:	TATTOO	D.O.B	AGE	S BULL
BEN24MV268	V268	21/10/2024	21 MONTHS	

STRATHMORE MAURICE M684 (PS)
SIRE; STRATHMORE RIPPER R280 (PS)
 MULTIPLE DAM

BENELKAY LUCKY L114 (PS)
DAM; BENELKAY Q195 (P)
 BENELKAY J023 (P)

WEIGHT	DWG	SS	P8/RIB	EMA	IMF	HORN/POLL	MOTILE	MOPH

200	400	600	MAT	MILK	SS	CWT	EMA	RIB	RUMP	RB Y	IMF
+2	+5	+6	-1	+2	+1.0	+5	+2.0	+0.1	+0.1	+0.7	0
69%	69%	69%	63%	46%	66%	54%	45%	53%	52%	39%	53%

Venezuela (PS), More of a moderate style animal, and would be an ideal cross breeding bull. Ripper (his Sire) is breeding very consistent, strong bodied bulls with great constitutions and finishing ability. Dam Q195 (P) a valued young breeder with four calves, Venezuela being her first sale bull.

Purchaser;

\$



LOT 29

BENELKAY V164 (P)

ID NO:	TATTOO	D.O.B	AGE	H BULL
BEN24MV164	V164	23/10/2024	21 MONTHS	

BURRAMURRA BOSS 152 (PP)
SIRE; BENELKAY SHOWTIME S204 (P)
 BENELKAY L195

BENELKAY QUICKSHOT (PP)
DAM; BENELKAY S057 (P)
 BENELKAY Q041

WEIGHT	DWG	SS	P8/RIB	EMA	IMF	HORN/POLL	MOTILE	MOPH

200	400	600	MAT	MILK	SS	CWT	EMA	RIB	RUMP	RB Y	IMF
+3	+1	-1	+10	+4	-0.3	+3	+2.4	+1.0	+0.8	+1.0	-0.1
66%	67%	67%	62%	47%	65%	54%	45%	52%	52%	39%	53%

V164 (P), Clean bodied bull with good length and strong carcase attributes. Dam S057 (P), had V164 as a heifer and has had one more calf and is PTIC.

Purchaser;

\$



BENELKAY VALVOLINE V102 (P)

ID NO:	TATTOO	D.O.B	AGE	S BULL
BEN24MV102	V102	12/10/2024	22 MONTHS	



STRATHMORE JUBILEE Q362 (PS)
SIRE; YARRAWONGA TIC TOC T626 (P)
 YARRAWONGA L785

BURRAMURRA BOSS 152 (PP)
DAM; BENELKAY S155 (P)
 BENELKAY L023 (P)

WEIGHT	DWG	SS	P8/RIB	EMA	IMF	HORN/POLL	MOTILE	MOPH

200	400	600	MAT	MILK	SS	CWT	EMA	RIB	RUMP	RB Y	IMF
+9	+11	+23	+14	+3	+0.9	+6	+2.2	+0.7	+0.7	-	0
66%	67%	66%	61%	45%	59%	52%	43%	48%	47%	-	48%

Valvoline (P), Good type of Tic Toc bull, strong length, neat underline and plenty of width. Well balanced Growth EBVs with Positive Rib and Rump Fat Figures. Dam S155 (P) is a big framed dark cow, she has had three calves with Valvoline being her first sale bull.

BENELKAY VISA V170 (PP)

ID NO:	TATTOO	D.O.B	AGE	S BULL
BEN24MV170	V170	26/10/2024	21 MONTHS	

BURRAMURRA BOSS 152 (PP)
SIRE; BENELKAY SHOWTIME S204 (P)
 BENELKAY L195

BENELKAY LEXUS 1524 (PP)
DAM; BENELKAY K009 (P)
 BENELKAY JAVA

WEIGHT	DWG	SS	P8/RIB	EMA	IMF	HORN/POLL	MOTILE	MOPH

200	400	600	MAT	MILK	SS	CWT	EMA	RIB	RUMP	RB Y	IMF
+8	+16	+22	+24	-2	+0.5	+9	+2.8	+0.6	+0.5	+0.6	+0.1
69%	69%	69%	63%	52%	67%	55%	48%	54%	54%	42%	55%

Visa (PS) , High performing Showtime son, dark coloured with a strong muscle pattern, positive Rib and Rump Fat EBVs. Dam K009, very fertile old breeder with nine calves, kept breeding through the three bad drought years. Five classifying, her best sale bull being Queenslander selling to James Wippell in 2021.

Purchaser;

\$



BENELKAY VANCOUVER V252 (PP)

ID NO:	TATTOO	D.O.B	AGE	S BULL
BEN24MV252	V252	14/10/2024	22 MONTHS	



GLENN OAKS NASHVILLE N128 (PS)
SIRE; BULLAMAKINKA REMINGTON R294 (P)
 BULLAMAKINKA K31 (P)

BURRAMURRA BOSS 152 (PP)
DAM; BENELKAY P107 (P)
 BENELKAY F29 (P)

WEIGHT	DWG	SS	P8/RIB	EMA	IMF	HORN/POLL	MOTILE	MOPH

200	400	600	MAT	MILK	SS	CWT	EMA	RIB	RUMP	RB Y	IMF
+4	+1	+11	+27	+1	-0.4	+4	+0.2	-0.6	-0.8	+0.6	-0.1
71%	70%	70%	65%	48%	67%	56%	48%	54%	54%	41%	55%

Vancouver (PP), Homozygous Poll, Dark coated long bodied style of a bull with plenty of natural thickness. Dam P109 (P) has had three calves with Vancouver being her first Sale bull.

BENELKAY VANDERSTAD V270 (PS)

ID NO:	TATTOO	D.O.B	AGE	S BULL
BEN24MV270	V270	18/10/2024	22 MONTHS	



STRATHMORE MAURICE M684 (PS)
SIRE; STRATHMORE RIPPER R280 (PS)
 MULTIPLE DAM

BENELKAY MOHICAN M034 (PP)
DAM; BENELKAY Q187 (P)
 BENELKAY H093

WEIGHT	DWG	SS	P8/RIB	EMA	IMF	HORN/POLL	MOTILE	MOPH

200	400	600	MAT	MILK	SS	CWT	EMA	RIB	RUMP	RB Y	IMF
+4	+4	+12	+1	+1	+0.9	+2	+2.3	+1.7	+1.9	+0.3	+0.2
69%	68%	69%	63%	45%	67%	54%	46%	54%	53%	40%	54%

Vanderstad (PS), Big upstanding young poll scurred bull, with good growth for age. Moderate Growth EBVs, good EMA, Positive Rib and Rump Fat EBVs being in the top 15%. Dam Q187 (P) has had four calves with Vanderstad being her first sale bull.

Purchaser;

\$

BENELKAY V260 (P)

ID NO:	TATTOO	D.O.B	AGE	H BULL
BEN24MV260	V260	27/11/2024	20 MONTHS	



DANGARFIELD YAPUNYAH Y232 (P)
SIRE; DANGARFIELD EL NINO E119 (PP)
 DANGARFIELD 8041 (P)

BULLAMAKINKA H82 (PS)
DAM; BENELKAY K077 (P)
 BENELKAY F147 (P)

WEIGHT	DWG	SS	P8/RIB	EMA	IMF	HORN/POLL	MOTILE	MOPH

200	400	600	MAT	MILK	SS	CWT	EMA	RIB	RUMP	RB Y	IMF
0	+1	-4	-6	-3	-0.2	+1	+2.2	+1.6	+1.6	+0.7	+0.3
68%	68%	69%	61%	48%	67%	54%	47%	54%	54%	41%	55%

V260 (P), Dangarfield El Nino son, well laid in shoulders and neck extension. Dark coloured with a good outlook. Dam K077 (P) good old reliable breeder, has had nine calves with four classifying and two other sale bulls.

LOT 35

BENELKAY VOSS V162 (P)

ID NO:	TATTOO	D.O.B	AGE	S BULL
BEN24MV162	V162	27/10/2024	21 MONTHS	

BURRAMURRA BOSS 152 (PP)
SIRE; BENELKAY SHOWTIME S204 (P)
 BENELKAY L195

YARRAWONGA M134 (PS)
DAM; BENELKAY Q077 (P)
 BENELKAY J013

WEIGHT	DWG	SS	P8/RIB	EMA	IMF	HORN/POLL	MOTILE	MOPH

200	400	600	MAT	MILK	SS	CWT	EMA	RIB	RUMP	RB Y	IMF
+11	+12	+15	+24	-1	+0.7	+8	+2.4	+0.4	+0.1	+0.5	+0.2
69%	69%	69%	64%	50%	67%	55%	48%	54%	53%	41%	55%

Voss (P), Strong carcase bull carrying good width over the top line and length. Good EMA EBVs with Positive Rib and Rump Fats. Dam Q077 has had four calves with all classifying, producing three sale bulls and one female retained in the stud herd.

Purchaser;

\$

LOT 36

BENELKAY VICAT V230 (P)

ID NO:	TATTOO	D.O.B	AGE	S BULL
BEN24MV230	V230	29/10/2024	21 MONTHS	

YARRAWONGA M134 (PS)
SIRE; BENELKAY SNIPER S266 (PS)
 BENELKAY L163

WAVE HILL DAPTO D564 (PS)
DAM; BENELKAY M077 (P)
 BENELKAY 1651 (P)

WEIGHT	DWG	SS	P8/RIB	EMA	IMF	HORN/POLL	MOTILE	MOPH

200	400	600	MAT	MILK	SS	CWT	EMA	RIB	RUMP	RB Y	IMF
+9	+20	+13	+12	-1	+0.6	+6	+0.8	+0.5	+0.3	-0.4	+0.3
67%	68%	68%	61%	51%	67%	54%	48%	55%	54%	42%	55%

Vicat (P), Stylish dark tropical skinned bull with good length of carcase and a Sires outlook. Dam K077 (P) has had five calves then sold. Vicat being her first sale bull.

Purchaser;

\$



LOT 37

BENLKAY VALETINI V232 (PS)

ID NO:	TATTOO	D.O.B	AGE	S BULL
BEN24MV232	V232	26/10/2024	21 MONTHS	



YARRAWONGA M134 (PS)
SIRE; BENLKAY SNIPER S266 (PS)
 BENLKAY L163

BENLKAY LUCKY L114 (PS)
DAM; BENLKAY P135 (P)
 BENLKAY K085 (P)

WEIGHT	DWG	SS	P8/RIB	EMA	IMF	HORN/POLL	MOTILE	MOPH

200	400	600	MAT	MILK	SS	CWT	EMA	RIB	RUMP	RB Y	IMF
+15	+20	+20	+26	+2	+0.8	+12	+0.8	-0.2	-0.7	+0.2	-0.2
67%	68%	69%	62%	49%	67%	55%	47%	54%	54%	42%	55%

Valetini (PS), Typical Sniper son, good muscling with plenty of bone and depth of body. Strong Growth EBVs. Dam P135 (P) has had four calves to date. Her other sale bull sold in 2025, Utah for \$10,000 to Robert and Julie Vise VIC.

Purchaser;

\$

BENELKAY V050 (P)

ID NO:	TATTOO	D.O.B	AGE	H BULL
BEN24MV050	V050	18/10/2024	22 MONTHS	



SIRE; STRATHMORE MAESTRO M354 (AI)(PP)
STRATHMORE SENATOR S498 (P)
 STRATHMORE L355

DAM; YARRABEE INFORCE 1459 (P)
BENELKAY T149 (P)
 BENELKAY R013 (P)

WEIGHT	DWG	SS	P8/RIB	EMA	IMF	HORN/POLL	MOTILE	MOPH

200	400	600	MAT	MILK	SS	CWT	EMA	RIB	RUMP	RB Y	IMF
+7	+11	+10	+17	-3	+0.4	+4	+1.2	+1.1	+1.0	+0.4	+0.2
70%	66%	68%	62%	45%	66%	53%	45%	51%	51%	39%	53%

V050 (PS), Ideal heifer bull. Not the widest bull but he keeps ticking all the boxes and holds his place in the sale team. Good breed type, with a dark red colour, Positive Rib and Rump Fat EBVs. Dam T149 (P) had V050 as a heifer and has had one other calf and is PTIC.

BENELKAY VISIONARY V192

ID NO:	TATTOO	D.O.B	AGE	S BULL
BEN24MV192	V192	25/9/2024	22 MONTHS	

ROSEVALE JACKAROO J566 (P)
SIRE; NIOA QUARTERMASTER Q34 (P)
 GLENN OAKS MATILDA M84 (P)

YARRAWONGA M134 (PS)
DAM; BENELKAY Q163 (P)
 BENELKAY J221 (P)

WEIGHT	DWG	SS	P8/RIB	EMA	IMF	HORN/POLL	MOTILE	MOPH

200	400	600	MAT	MILK	SS	CWT	EMA	RIB	RUMP	RB Y	IMF
+25	+39	+46	+40	-3	+0.9	+22	+2.5	0	-0.3	+0.3	-0.4
71%	71%	72%	67%	55%	68%	58%	51%	56%	56%	45%	57%

Visionary, Strongly built, heavy boned, dark coated with good length of carcase. Should be up the front of the catalogue but decided to give people an opportunity at the back of the sale. All his Growth EBVs as well as his Carcase Weight are all above the Top 5%. Dam Q163 (P) has had four calves with one female retained in the stud herd and Visionary being her first sale bull.

Purchaser;

\$



BENELKAY V182 (PP)

ID NO:	TATTOO	D.O.B	AGE	H BULL
BEN24MV182	V182	14/11/2024	21 MONTHS	



DANGARFIELD YAPUNYAH Y232 (P)
SIRE; DANGARFIELD EL NINO E119 (PP)
 DANGARFIELD 8041 (P)

YARRAWONGA ENTHRONE K416 (PP)
DAM; BENELKAY N115 (P)
 BENELKAY L017 (P)

WEIGHT	DWG	SS	P8/RIB	EMA	IMF	HORN/POLL	MOTILE	MOPH

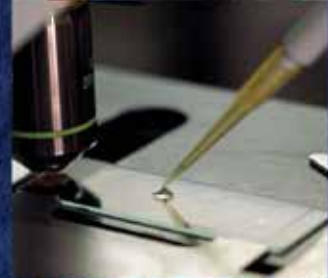
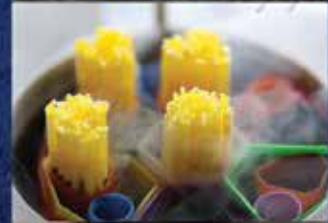
200	400	600	MAT	MILK	SS	CWT	EMA	RIB	RUMP	RB Y	IMF
+7	+17	+26	+38	-1	+0.8	+9	+1.4	+1.0	+0.6	+0.6	+0.2
67%	67%	68%	61%	44%	67%	53%	46%	54%	53%	40%	54%

V182 (PP), Homozygous Poll, Quiet, docile nature and would be suitable for heifer joining if desired. Well balanced EBVs with positive Rib and Rump Fats. Dam N115 (P) has had five calves with two other sale bulls. She has since been sold due to age.

Hunt Ag Solutions



Your Agronomy specialist: Jim Hunt
58 Stock Road Gunnedah 2380
MOB 0429 721 367



AUSTRALIAN
PREMIER
GENETICS

*Dedicated to assisting
with all your repro
needs.*

Services Include:

-  Artificial Insemination
-  Preg Testing
-  Semen Collection
-  Semen Testing
-  MOET & IVF
-  Live Export via Air

Caitlin Warner & Brendan Holland
0419 238 216 0407 890 944

760 Bingie Grumble Rd, Coonabarabran NSW 2357

info@australianpremiergenetics.com

Shake hands with your local WFI insurance rep, Brett.

Insurance:  **Farm**  **Business**  **Home and Car**

Insure with WFI and you'll deal directly with a local WFI rep who will take the time to understand your insurance needs. So, for personal service that comes to you, contact Brett Johns today.

Brett Johns
WFI Authorised Representative

0418 920 102
brett.johns@wfi.com.au



Insurance you can *shake hands* with.



Keith Saunders
Director

Suite 3/202 Hume St
(PO Box 521)
Toowoomba QLD 4350

M 0417 463 079
P 07 4688 8200

E keith@calibreadvisors.com.au
W calibreadvisors.com.au

Dugald Geddes

'Violet Banks' 3044 Orange Grove Road
Gunnedah NSW 2380



STOCK TRANSPORT

Mob 0429 432 552

Fully Insured for Stud Stock

Truck Combinations

18 Foot 30 Foot 26 Foot 52 Foot



BUYERS INSTRUCTION SLIP

Bid Card Number

PIC Number

Buyer

Postal Address

..... Postcode

Client Name

Client Phone Number Mobile

Client Email Address

Agents Name Mobile

Agents Company

Agency Address

Lots Purchased

Total Number of Lots Purchased

Is a Stud Transfer Required? Yes No

If 'Yes' please state name to be transferred to

..... Stud Number

Delivery

Delivery Day/Date Time

Destination

(If different from postage address)

Carrier's Name & Travel Arrangements

.....

Signature Date





THANK YOU

We wish to thank you for attending our
15th Annual Benelkay Poll Santa Bull Sale in 2026

Thank you to the Mullaley Pre School for their catering.

We appreciate all our friends Agents and Clients, the successful purchases
as well as the under bidders who made the day what it has been.

Please have a safe trip home and we invite you back on
Thursday 19th August 2027 for our 16th Annual Sale.

2024 SALE SUMMARY				
CATEGORY	NUM.	TOTAL	AVERAGE	TOP PRICE
S BULLS				
HERD BULLS				
GROSS				



**FREIGHT INCENTIVES AVAILABLE PLEASE ENQUIRE
ANDREW 0427 435 201**

VALUE FOR MONEY 2025



\$6,000



\$8,000



\$9,000



\$8,000

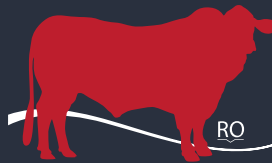


Download a catalogue pdf from www.benlkaysantas.com.au

POLL SANTA GERTRUDIS BULL SALE



VIEW AUCTIONS
PLUS CATALOGUE



Benelkay

ANDREW AND JULES ORMAN
BENELKAY SG STUD
PHONE 0427 435 201

PLEASE BRING THIS CATALOGUE TO THE SALE

WWW.BENELKAYSANTAS.COM.AU